

# Install Instructions for the Front Line Security Station™ “L” Model

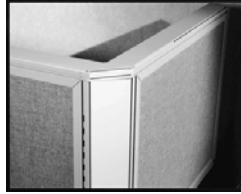
Tools necessary for installation:  
Hammer  
Flathead screwdriver  
Level  
Cordless drill



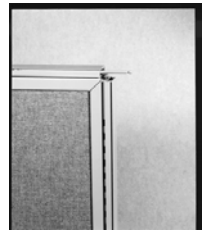
## Right angle 2-way 90° Connection

Parts:

- 1 - Right angle 2-way 90° top cap (90P2090EC)
- 1 - Rigid hinge 3-bead
- 1 - Two way 90 base plate
- 1 - Plastic outside cover
- 4 - 8” pins



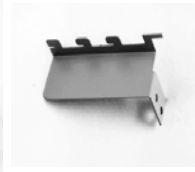
- Step 1. Slide the base plate into the left side of the bottom horizontal frame of the 60” panel.
- Step 2. At the top of the 60” panel, slide the pins into the horizontal grooves at the top of the frame.
- Step 3. Place the 24” panel together at the 90° right angle on the left side. Make sure the base plate slides into the other panel.
- Step 4. Slide the 3-bead hinge down the adjoining circular ports of both panels.
- Step 5. Place the right angle 2-way 90° top cap over the connection.
- Step 6. Tap the 8” pins from each panel into the 2-way 90° top cap using a flat edge screwdriver and hammer.
- Step 7. To finish the connection, snap the plastic outside cover into the outside circular ports of each panel.
- Step 8. Using a Level adjust the glides on the bottom of the frame, if necessary, to level the panel on the floor.



## Attaching the work surface to the panels

Parts:

- 1 - 60” x 24” work surface
- 1 - Work Height C-leg (WHCL)
- 1 - Left support bracket 16” (SB16)
- 1 - Left return panel bracket (RPB)
- Bracket screws provided



- Step 1. Position the left support bracket firmly into the left panel slot of the 60” panel. Place the bracket approximately 28-1/4” off the floor for work-height level.
- Step 2. Make sure bracket is securely attached and level. Apply pressure to back of bracket to insure it is fully extended.
- Step 3. Attach the work height C-leg to the right side of the 60” panel.
- Step 4. Fasten work surface to brackets with the screws provided.

## Attaching the counter top to the panels:

Parts:

- 1 - 60 x 24 x 16 “L” shaped counter top
- 3 pr - support bracket 5” (SB5)
- Screws



- Step 1. Center counter top on top of the panels.
- Step 2. Attach one pair of brackets on each end of the counter top and one pair in the “corner” portion of the counter top. Each half of the pair goes on opposite sides of the panel to balance the counter top.
- Step 3. Hook brackets into the top slots of the panel and push the brackets upward to set into the slots.
- Step 4. Screw the brackets into the counter top.